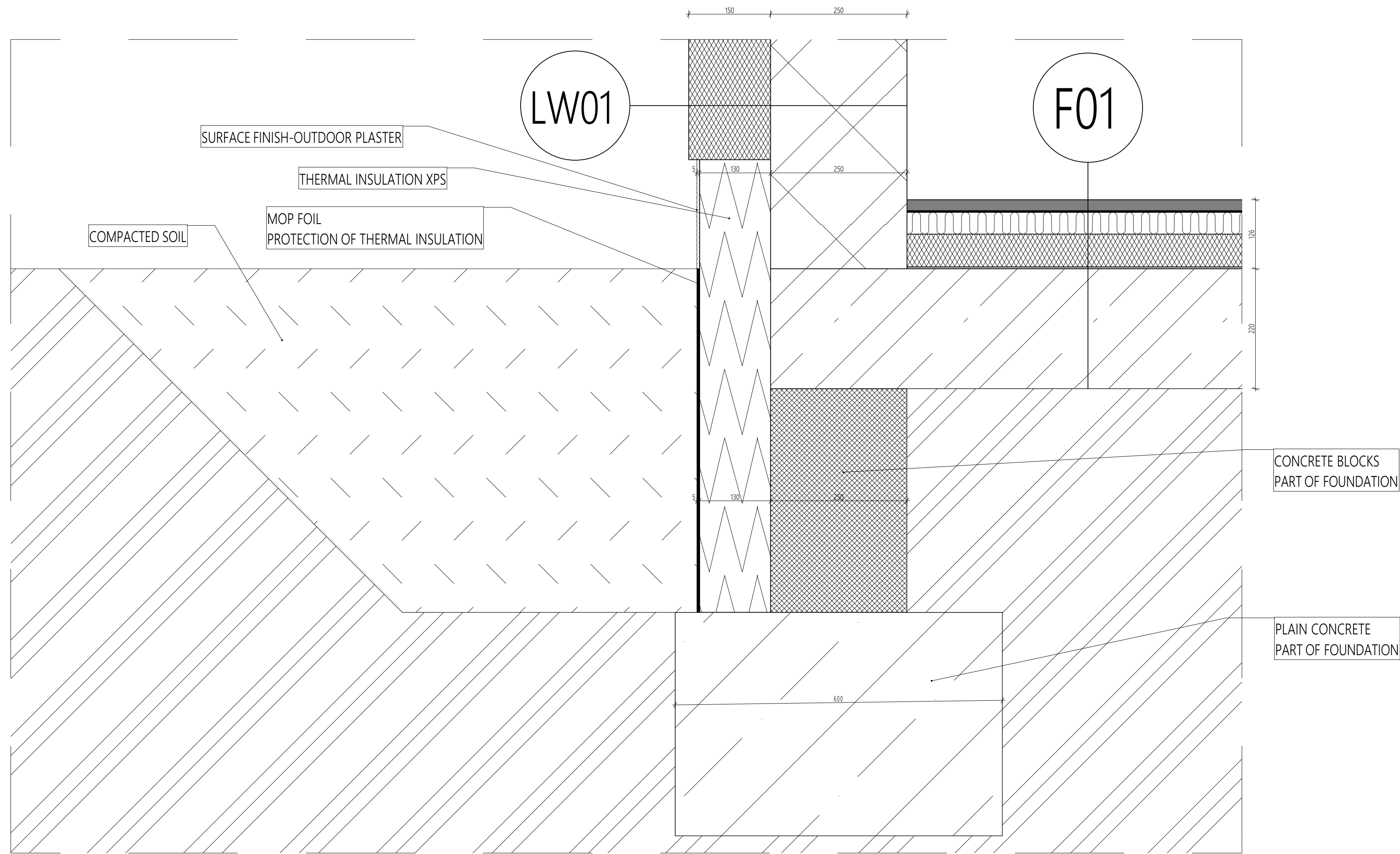


DETAIL A - DETAIL OF SOCLE WITH FOUNDATION



LIST OF COMPOSITIONS			
F01			
SURFACE FINISH	Laminate floor	10	
SEPARATION LAYER	DAMPING PAD MIRELON FOAM POLYETHYLEN	3	
SPREADING LAYER	Anhydrite screed	55	
SEPARATION LAYER	Separation layer - PE foil	1	
THERMAL INSULATION	Acoustic insulation - EPS	80	
LOAD BEARING	Reinforced concrete	200	
PENETRATION LAYER	Penetration layer	1	
SURFACE FINISH	Plaster - indoor	10	

LW01			
SURFACE FINISH	Plaster - outdoor	10	
THERMAL INSULATION	THERMAL INSULATION - polystyren EPS	150	
BINDING LAYER	Cement adhesive	5	
LOAD BEARING	LOAD BEARING MASONRY WALL POROTHERM...	250	
PENETRATION LAYER	Penetration layer	1	
SURFACE FINISH	Plaster - indoor	10	

0,000 = 395,100		m.a.s.l., B.H.S. / COORDINATE SYSTEM S-JTSK	
COURSE	BACHELOR'S THESIS	<div><div>T</div><div>FAKULTA STAVEBNÍ ústav pozemního stavitelství</div></div>	
DRAWN BY	ŠIMON MADZIK		
SUPERVISED BY	Ing. JAN MÜLLER, Ph.D.		
INVESTOR	-		
LOCATION	PASOHLÁVKY, 691 22, PARCEL 3163/596		
PROJECT TITLE	GUESTHOUSE IN PASOHLÁVKY		
BUILDING OBJECT	BO 01 GUESTHOUSE IN PASOHLÁVKY	PAPER FORMAT	4xA4
PART	0.1.2 BUILDING STRUCTURAL SOLUTION	DATE	10/2022
DRAWING TITLE :	DETAIL A - DETAIL OF SOCLE WITH FOUNDATION	PROJ. PHASE	DPS
		SCALE 1:5	DRAWING NO.